



DATASITE

A Fortress for the Digital World

ORLANDO

877.374.2656

www.DataSiteColo.com



"DataSite is a state of the art facility that provides additional infrastructure protection to our disaster recovery/business resumption plans and processes."

-Robert Yancello
Chief Technology Officer for UCF

DataSite

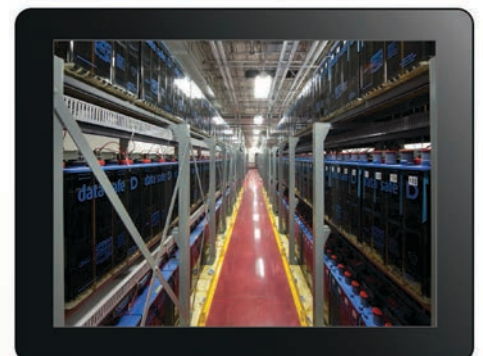
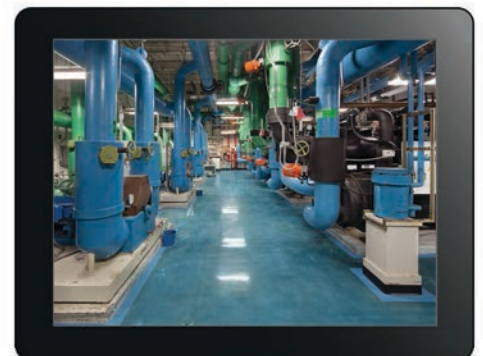
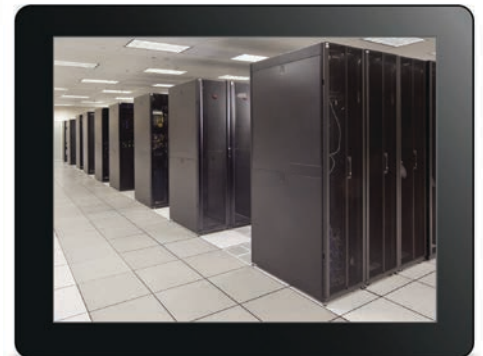
DataSite data centers are a unique blend of purpose-built, specially constructed data center facilities and expertly managed data center infrastructure designed to offer affordable data center options that meet the demanding power requirements and up-time requirements of the modern computing environment.

Customized Data Center Solutions

DataSite offers a range of data center solutions from single locking cabinets to secure colocation suites to enterprise class facilities with dedicated infrastructure. Scalable infrastructure available at a moment's notice, variable power densities and customizable infrastructure redundancies provide a world class facility while balancing the budget.

Metered Power

Most every data center operator charges a flat rate regardless of power utilization plus an additional cost for redundant power. Not at DataSite. In all colocation cages and private suites DataSite offers consumption-based billing so you only pay for the actual amount of power consumed by your IT systems. DataSite clients are saving approximately 50% on the power costs charged in other colocation facilities.





DataSite Orlando

- 130,000 Sq. Ft. Purpose Built Data Center
- Freestanding Building on 17 Acres
- Anonymous Building with Windowless Exterior
- 8-Inch Thick, Steel-Reinforced Concrete Walls
- 160 MPH Wind Rated and Certified Roof
- 60 Miles Inland & 100 Feet Above Sea Level
- Pre-action Dry Pipe Fire Suppression System



Massive Power Infrastructure

- Six-12,470 Volt Utility Feeds
- N+1 or 2N UPS Power
- 12 Megawatts of UPS
- Six 2.8 Megawatt Backup Generators
- 60,000 Gallons of Reserve Fuel
- 48-Hour Generator Run Time



State-of-the-Art Cooling

- 2,600 Tons of Chiller Capacity
- Up to 600 watts/sf Power Density
- Hot/Cold Aisle Containment
- Chimney Cabinets - up to 20kW per Rack
- Rear Door Heat Exchangers - 30+ kW per Rack
- Support for Water Cooled Super Computers (HPC)



DataSite Offerings

- Colocation Cages & Locking Cabinets
- Private Data Center Suites
- SSAE-16 (SOC) Type II Audits
- Metered Power Billing
- Carrier Neutral Telecommunications



Impenetrable Security

- Biometric & Key Card Access System
- Extensive Video Surveillance Systems
- 24/7 On-Premise Security Guards
- Razor Wire Perimeter Fence
- Anti-tailgating Man Traps