



POWERED SHELL DATA CENTER

AVAILABLE IMMEDIATELY | FULL COMMISSION



Pacific Northwest | Boise, ID

EFFICIENT AND GREEN

- 4¢ per kWh Power Rates
- Optimal Free Cooling Climate
- Green Hydroelectric Power

READY AND ON PURPOSE

- Purpose Built Data Center Facility
- 4 MW Installed & Expandable
- Low Natural Disaster Risk



DataSite Boise is a purpose built data center facility featuring two independent facilities under one roof. The site is comprised of both a powered shell with independent utility feeds, switchgear, UPS and cooling systems as well as a Tier III wholesale colocation data center providing private suites, secure cages and locking cabinets.

CONTACT: **Lauren Tucker**
Director of National Sales
lauren.tucker@datasitecolo.com
407.591.5891

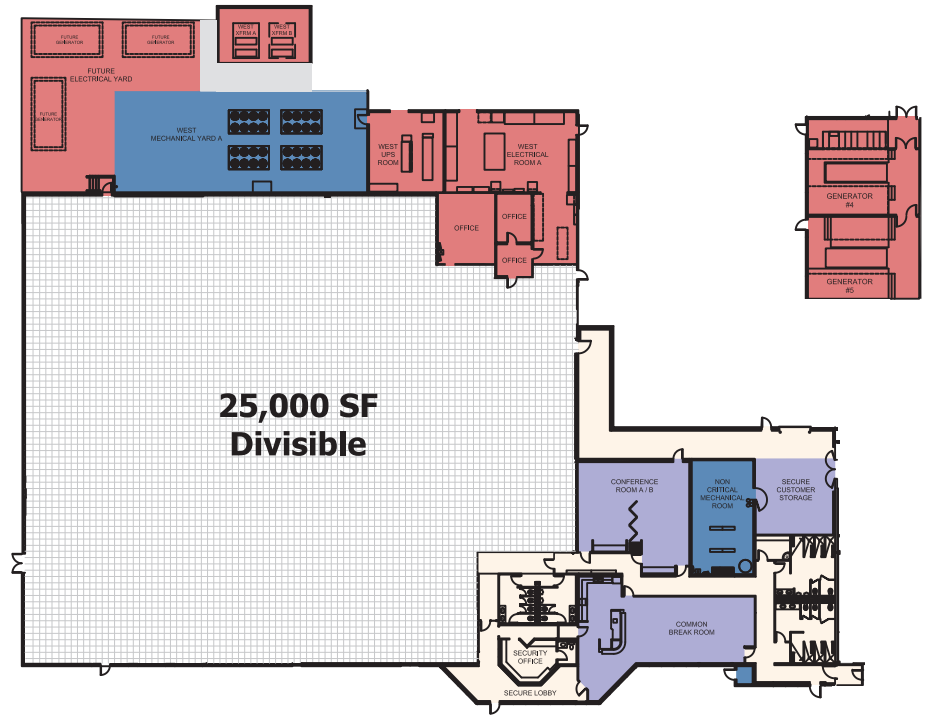
Lucas Linnemeyer
Business Development Manager
lucas.linnemeyer@datasitecolo.com
208.599.5995


DATA SITE
www.DataSiteColo.com

POWERED SHELL | AVAILABLE IMMEDIATELY

Powered Shell

- 4¢ per kWh Power Rates
- Optimal Free Cooling Climate
- Green Hydroelectric Power
- Low Natural Disaster Risk



Tenant Managed or Turnkey Option

Immediately Available Existing Infrastructure

Electricity Services: Dual 12.47 kV Utility Services - Two 12.47 kV to 480V Dual 2,500kVA Transformers

Main Switchgear: Double Ended, Main Tie Main - 3000Amp@480V each side with 3000 Amp@480V Tie Breaker

Generator Plant: 2,500 kW Plant - Two 1,250 kW Diesels on 4000Amp@480V Paralleling Gear, with Load Bank Tap Box

Mechanical Switchgear: Double Ended, Main Tie Main - 2000Amp@480V each side ewith 2000Amp@480V Tie Breaker

UPS Output Switchgear: Double Ended Main Tie Main - 800Amp@480V each side, 800Amp@480V Tie Breaker

Non Critical Switchgear: Double Ended Main Tie Main - 2000Amp@480V each side, with 2000Amp@480V Tie Breaker

Purpose Built Data Center Heritage

25,000 Square Feet, Divisible

Secure Site and Facility

Pre Action Fire Suppression System

Dual Diverse Fiber Entry

Leverage Existing Security Staffing, Common Area Amenities of DataSite Boise or enjoy a 100% Exclusive premises

UPS System Built to Suit by DataSite or Customer

System Desing & Capacity to Suite - 400kW (existing) to 2000+KW

System Redundancy to Suit (N-N+1-2N)

System Manufacturer to Suit

Cooling System Built to Suit by DataSite or Customer

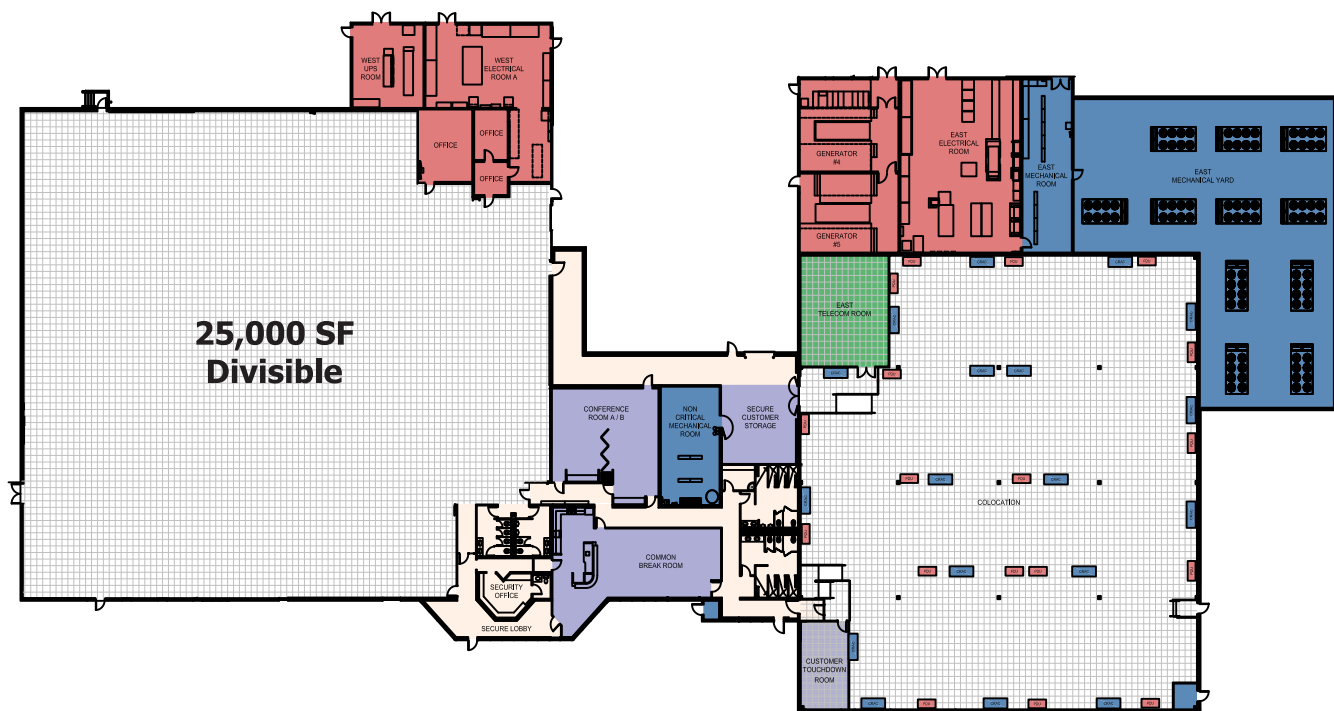
System Design & Capability to Suit - Kyoto Wheel, Evaporative Cooling, Free Cooling Optimized Chilled Water - Tenant Choice

Boise's "Priceless" Free Cooling Climate Optimizes All Cooling System Options

CONTACT: **Lauren Tucker**
Director of National Sales
lauren.tucker@datasitecolo.com
407.591.5891

Lucas Linnemeyer
Business Development Manager
lucas.linnemeyer@datasitecolo.com
208.599.5995


DATA SITE
www.DataSiteColo.com



MANAGED INFRASTRUCTURE: Tier III - High Power Density - 24 HR Security

In addition to the powered shell, DataSite's Boise data center features an enterprise class Tier III colocation facility. The data center is uniquely engineered to service high power density requirements as well as optimizing utility costs by taking advantage of the outstanding free cooling climate and renewable hydroelectric power in the region.

DataSite Wholesale Colocation

- Private Data Center Suites
- Colocation Cages
- Locking Cabinets
- 20,000 SqFt Raised Floor

Extensive 24 Hour Security

- Perimeter Razorwire Fence
- Onsite Security Guards
- Keycard and Biometrics
- Anti-Tailgating Mantraps
- Video Surveillance

Purpose Built Data Center

- Dual Incoming Utility Feeds
- High Power Density (600+watts/SF)
- Metered Power Billing
- Concurrently Maintainable Critical Systems
- Optimal Free Cooling Environment
- Dual Diverse Fiber Entry
- Carrier Neutral - Multiple Carriers Installed



CONTACT: **Lauren Tucker**
Director of National Sales
lauren.tucker@datasitecolo.com
407.591.5891

Lucas Linnemeyer
Business Development Manager
lucas.linnemeyer@datasitecolo.com
208.599.5995


DATA SITE
www.DataSiteColo.com

LOCATION, LOCATION, LOCATION



BOISE, IDAHO | LOW UTILITY RATES - HYDROELECTRIC POWER - FREE COOLING

Boise, Idaho, consistently ranked one of the best places to live in the United States, is located in the Pacific Northwest in a region known as "The Treasure Valley". This region of the country is a high desert, offering a cool, dry climate with little risk of natural disasters. Boise provides among the highest number of FREE COOLING hours in the nation. The City of Boise boasts a robust metropolitan area, a skilled high technology workforce, an international airport and Boise State, a world-class university.

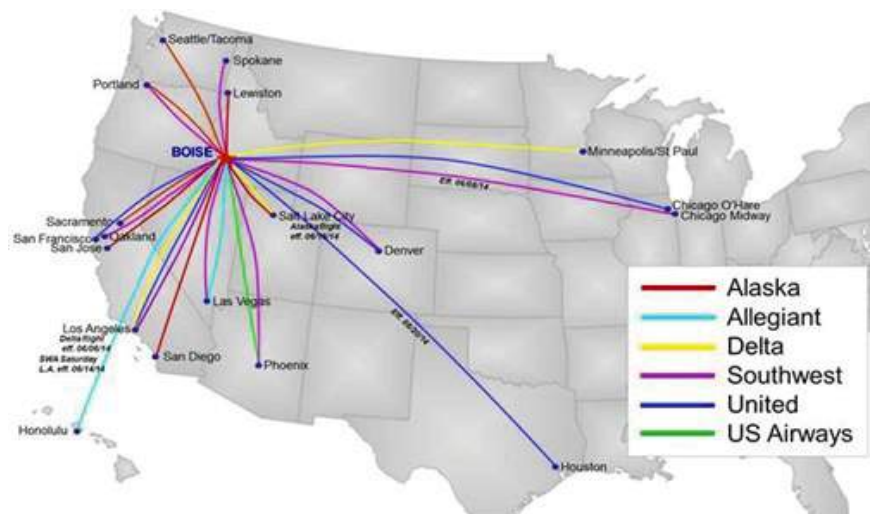
Benefits of Boise, Idaho

- 4¢ per kilowatthour Utility Rates
- Renewable Hydroelectric Power
- Free Cooling Most of the Year
- Major Fiber Routes for Pacific Northwest
- Low Natural Disaster Risk
- High Tech Workforce
- World-class University
- Ranked in Top 10 Cities to Live



Low Risk of Natural Disaster

- Outside of the 500 Year Flood Plain
- Lowest Lightning Flash Density in US
- Lowest Tornado Risk - Wind Zone 1
- Low Earthquake Risk - Seismic Zone 2
- Outside the Tsunami Hazard Zone



CONTACT: **Lauren Tucker**
Director of National Sales
lauren.tucker@datasitecolo.com
407.591.5891

Lucas Linnemeyer
Business Development Manager
lucas.linnemeyer@datasitecolo.com
208.599.5995


DATA SITE
www.DataSiteColo.com